




Escooterfix - Relace mainboard any Xiaomi Mi electric scooter

Remove and replace the mainboard on Xiaomi Mi 1S, Essential, Pro, Pro2, M365 and Mi3

 Difficulty **Medium**

 Duration **20 minute(s)**

 Categories **Electronics**

 Cost **59 EUR (€)**

Contents

Step 1 - Disconnecting the ESC

Step 2 - Remove silicon

Step 3 - Unbolt the 2 screws holding the charger connector

Step 4 - Unscrew the 3 hex bolts

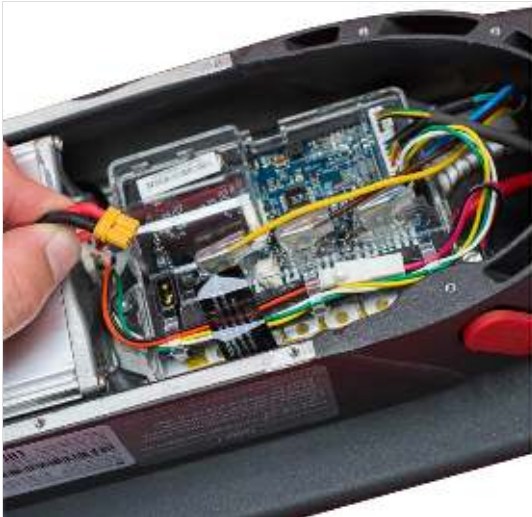
Comments

Materials

Tools

Step 1 - Disconnecting the ESC

The battery connects to the ESC via a **yellow XT30 plug**, carefully pull this out



Step 2 - Remove silicon

Next take a knife and remove some of the silicon sealant securing the **charger socket cable** (the white plastic connector with a red and black wire running in and out of it) until it can be disconnected.



Step 3 - Unbolt the 2 screws holding the charger connector

Unbolt the two **2mm hex bolts** securing the socket to the chassis and carefully pull the loom and connector through the hole.



Step 4 - Unscrew the 3 hex bolts

The ESC is secured to the chassis with **three 3mm hex bolts** with washers, remove these and the remaining connector cables (motor/control/lighting) before lifting it out. The deckplate doubles as a heatsink and the ESC will have some thermal paste on the backing plate to facilitate this.

